

# ***HRLASER***

Tiny in Size, Mighty in Impact –  
Rise Above the Ordinary.



**A1MD30i**

Introducing the future of mobile welding technology.

01

## Cutting-Edge D-Mode – Enhanced Penetration Depth with less energy consumption.

**Achieve Up to 5.0mm in Penetration Depth**

Leading the Global Market in Optical and Control Technologies for Enhanced Efficiency, Reduced Energy Use, and Superior Weld Depth

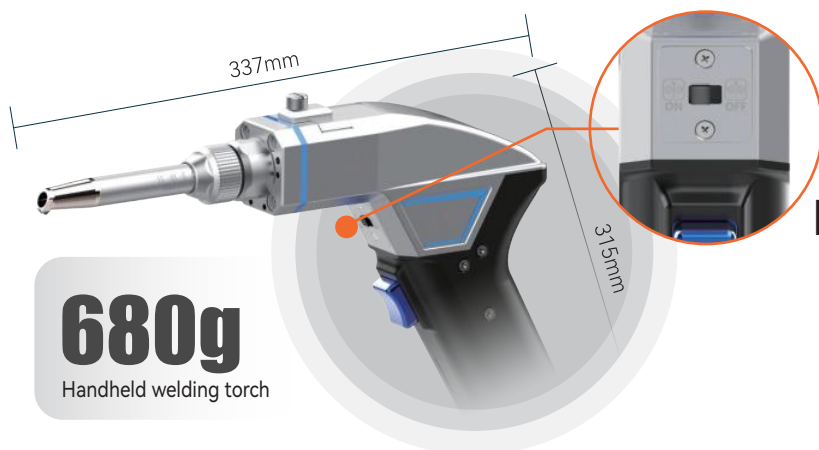
**1.5x**  
Performance  
Improvement

**1.5x**  
Welding  
Depth

02

## Unmatched Optical Technology: Setting Unprecedented Lightweight Records.

Excellence in Product Design: A Lightweight and Portable Machine Ideal for Mobile Welding. It Features a Light and Flexible Welding Torch, Small Cable Diameter, and Lightweight Construction for Extended Welding Sessions.

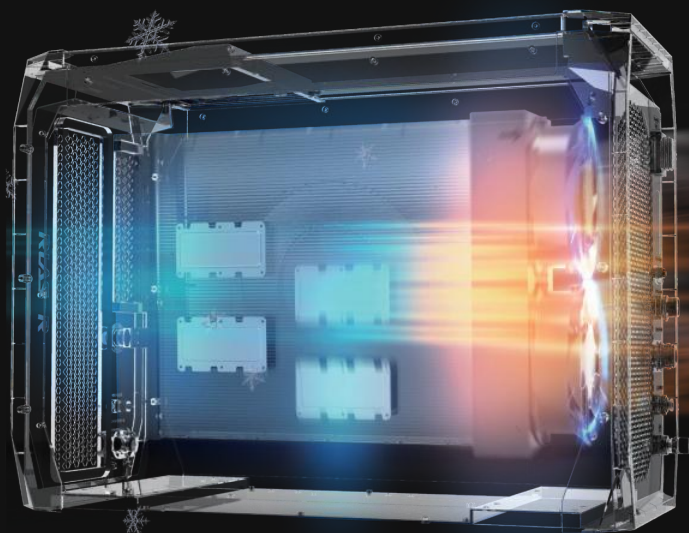


03

## Multi-functional Welding Torch with One-Click Control

Features an Integrated Single-Hand Wire Stop Switch, Eliminating the Need to Run Back and Forth, Thereby Improving Production Efficiency.

04



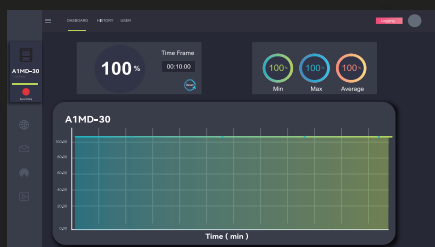
## Advanced Aerospace Cooling Technology

Low Power Consumption, Small Footprint, and Exceptional Reliability.

05

## Power Precision Control and Calibration Technology for Smooth, Perfect Welding Seams

This technology offers precise control over welding power and automated calibration, with power fluctuation kept under 3%. It ensures a uniformly bright laser beam and ideal linearity, crafting superior weld seams. This technology offers precise control over welding power and automated calibration, with power fluctuation kept under 3%. It ensures a uniformly bright laser beam and ideal linearity, crafting superior weld seams.



Real-Time Monitoring Interface



06

## Smart Wire Feeder: Precision Wire Handling with No Sticking

Benefit from Custom R&D Driven by Laser Control Technology, Offering Strong Power and Exact Control of Wire Feed Speed. It Automatically Retracts upon Laser Pause.

WFS1: In-House Developed Wire Feeding System





# A1MD30i Specifications

07

Product Model	A1MD30i
Machine Weight	< 29kg
Machine Volume	< 0.08m
Overall Dimensions	577mm x 265mm x 512mm
Welding Torch weight	0.68kg
Working Mode	Continuous / Pulsed "D-Mode"
Laser Wobble	0-4mm
Input Voltage	220VAC
Rated Power	2500W
Operating Temperature	0-40°



Material	Stainless Steel	Carbon Steel	Galvanized Steel	Aluminium
Single-side penetration	3.0mm	3.0mm	3.0mm	2.0mm

# Product Packaging Contents

08

Handheld Laser (A1MD30i)	1		Hexagon socket head countersunk head screws (M3*8mm)	12	
Soundproof Earplugs	5		Power Cable (5m)	1	
Cotton Swab 1	1		Ground Wire (5m)	1	
Cotton swab 2	1		Silicone Case	1	
Dust Mask	2		Wire Feeder Rack	1	
T10 Screwdriver	1		Lock Ring Wrench	1	
Safe Return Route	1		Gas Pipe (Φ6, 5M)	1	
Reel	1		Second Vent Quick Plug (Φ6 to Φ10)	1	
Gun Head Rack	1		Wire Feed Nozzle	1	
Armored Cable Rack	1		Protective Lens (Φ20*3)	1	
Eye Protection(OD8+)	1		Nozzles (1, 3, A, B and flat nozzle)	1	

The images and technical parameters provided in this brochure are for reference purposes only. Should there be any discrepancies or updates, the actual materials will take precedence.

**Distributed Internationally by Maxphotonics Co., Ltd.**